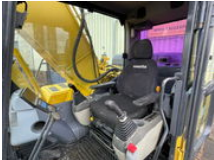


Komatsu PC290 NLC-8 Track Excavator Hammer Line CE Good Condition

General features

Brand	Komatsu
Subcategory	Crawler excavator
Construction year	2007
Condition	Used
General condition	Good
Fuel	Diesel
Reference	1692
CE marking	Yes



Characteristics

Empty weight

29.230kg

Komatsu PC290 NLC-8 Track Excavator Hammer Line CE Good Condition

Technical specifications

Drive

tracking

Description

Komatsu PC290 NLC-8 Track Excavator Year: 2007 Weight: 29.230KG Rock bucket with Teeth Work Lights Airconditioning CE Hammer Line / Hyd. Aux. Original colour Undercarriage 70% Machine is in working condition We can ship this machine to all destinations FOR MORE INFO: WWW.KALILEXPORT.COM

Accessories

- ALL INFO: WWW.KALILEXPORT.COM