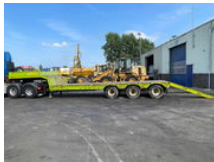


Trax SPES53 Lowbed Full Spring with Ramps 3 axle 53.000 KG Good Condition

General features

Brand	Trax
Subcategory	Lowloader
Construction year	1988
Date of first registration	15-01-1988
Condition	Used
General condition	Good
Reference	2020



Characteristics

GVW

53.000kg

Trax SPES53 Lowbed Full Spring with Ramps 3 axle 53.000 KG Good Condition

Technical specifications

Number of axes 3

Description

Trax SPES53 Lowbed 3 Axle 12 Tyre's Bed extendable (25cm per side) Loading Ramps FULL STEEL SUSPENSION ! TOTAL LENGHT 11 M BED LENGT 780CM FOR MORE INFO: WWW.KALILEXPORT.COM

Accessories

- Full Spring Suspension